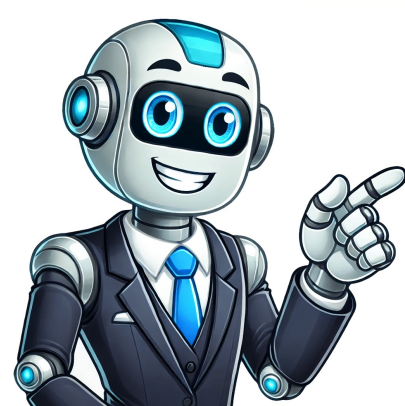


I'm not a robot

























## Samsung xpress m2024w manual

Do not block or push objects into the ventilation opening.This could result in elevated component temperatures which can cause damage or fire.Use of controls or adjustments or performance of procedures other than those specified herein may result in hazardous radiation exposure.Do not place the machine in an area with dust, humidity, or water leaks. Ask for help, and always use the appropriate amount of people to left the device safety.Then lift the machine:• If the machine weighs under 20 kg (44.09 lbs), lift with 1 person. • If the machine weighs 20 kg (44.09 lbs) - 40kg (88.18 lbs), lift with 2 people. • If the machine weighs more than 40 kg (88.18 lbs), lift with 4 or more people.The machine could fall, causing injury or machine damage.Choose a flat surface with enough space for ventilation to place the machine. Equipped with a powerful 400 MHz processor, this printer delivers fast and high-quality prints with a resolution of up to 1200 x 1200 dpi. Ask your question herePage 21View the manual for the Samsung Xpress SL-M2024W here, for free. See "General specifications" on page 60.Before moving the machine, turn the power off and disconnect all cords. Call a certified technician when the machine needs repairing.Page 15View the manual for the Samsung Xpress SL-M2024W here, for free. Ask your question herePage 8View the manual for the Samsung Xpress SL-M2024W here, for free. It can damage the machine.Page 13121. Do not allow children to touch. Clean the print head nozzles or laser scanner windows to remove any accumulated dirt or dust. Do you have a question about the Samsung Xpress SL-M2024W or do you need help?Ask your question hereBelow you will find the product specifications and the manual specifications of the Samsung Xpress SL-M2024W.The Samsung Xpress SL-M2024W is a printer that offers reliable printing capabilities for small office or home use. Do not forcefully pull the paper out during printing. Be careful, the paper output area is hot. Adjust the paper guides to fit the width of the paper being used. This manual comes under the category printers and has been rated by 1 people with an average of a 7.4. This manual is available in the following languages: English. The place should be well-ventilated and be far from direct light, heat, and humidity. Ask your question herePage 9View the manual for the Samsung Xpress SL-M2024W here, for free. Ask your question herePage 7View the manual for the Samsung Xpress SL-M2024W here, for free. The manual of the purchased cartridge usually contains the solution, if this does not work, it is advisable to contact the seller.In most cases, the inkjet printer cartridge is broken and the cartridge needs to be replaced.A laser printer prints with a toner and an inkjet printer prints with ink.DPI stands for Dots Per Inch and is the number of ink droplets (per inch) that end up on the paper when printing.Yes, the manual of the Samsung Xpress SL-M2024W is available in English .Is your question not listed? Call an electrician to change the electrical outlet, or this could result in electric shock.Do not allow pets to chew on the AC power, telephone or PC interface cords.This could result in electric shock or fire and/or injury to your pet. Stepping on or allowing the power cord to be crushed by a heavy object could result in electric shock or fire. Gently remove any jammed paper, making sure not to tear it in the process. Burns could occur. If you are using a cord which is longer than 2 meters (6 feet) with a 110 V machine, then the gauge should be 16 AWG or larger.Otherwise, it can cause damage to the machine, and could result in electric shock or fire.Make sure you plug the power cord into a grounded electrical outlet.Otherwise, this could result in electric shock or fire.Do not overload wall outlets and extension cords.This can diminish performance, and could result in electric shock or fire.Do not put a cover over the machine or place it in an airtight location, such as a closet.If the machine is not well-ventilated, this could result in fire.The machine should be connected tothe power level which is specified on the label.If you are unsure and want to check the power level you are using, contact the electrical utility company.a. AWG: American Wire GaugeUnplug this product from the wall outlet before cleaning the inside of the machine. Ask your question herePage 20View the manual for the Samsung Xpress SL-M2024W here, for free. It has a printing speed of up to 20 pages per minute, making it suitable for small printing tasks. Ask your question herePage 5View the manual for the Samsung Xpress SL-M2024W here, for free. Introduction5 During an electrical storm or for a period of non-operation, remove the power plug from the electrical outlet. The SL-M2024W supports various paper sizes, including letter, legal, executive, and envelopes. • The user should be able to access the power outlet in case of emergencies that might require the user to pull the plug out. Ask your question herePage 6View the manual for the Samsung Xpress SL-M2024W here, for free. Check for any obstructions that may be preventing the paper from feeding correctly. Make sure there are no remaining scraps of paper inside, close all doors securely, and then plug the printer back in.Begin by checking the ink or toner levels and replacing any cartridges that are low or empty. Ask your question herePage 25View the manual for the Samsung Xpress SL-M2024W here, for free. Ask your question herePage 23View the manual for the Samsung Xpress SL-M2024W here, for free. This printer is compatible with various operating systems, including Windows, macOS, and Linux, ensuring it can easily integrate into any existing setup. With a compact and straightforward design, the SL-M2024W seamlessly fits into any workspace without taking up too much space. With laser printers, calibrating the laser printer is recommended.Non-genuine cartridges may not be recognised by the printer. Place the machine in a well-ventilated space or open a window to circulate the air periodically.Do not place the machine on an unstable surface.The machine could fall, causing injury or machine damage.Page 14131. Ask your question herePage 26View the manual for the Samsung Xpress SL-M2024W here, for free. With its compact design, wireless connectivity, and convenient features, it is a suitable option for small office or home use.BrandSamsungModelXpress SL-M2024WProductprinterLanguageEnglishFiletypeUser manual (PDF)Can't find the answer to your question in the manual? Do not place anything on top of the machine (water, small metal or heavy objects, candles, lit cigarettes, etc.).This could result in electric shock or fire. Common reasons could include incompatible or empty cartridges, paper jams, connectivity issues, low memory, or software conflicts.It is best to gently pull the paper out of the printer. This monochrome printer is designed to provide efficient and cost-effective printing solutions for everyday needs. It has a standard paper capacity of up to 150 sheets, reducing the need for frequent paper refills. Also consider the space required to open the cover and trays. Additionally, the printer features a manual duplex printing functionality, allowing users to save on paper costs by printing on both sides of the paper. Do not clean the machine with benzene, paint thinner or alcohol; do not spray water directly into the machine. You may find the answer to your question in the FAQs about the Samsung Xpress SL-M2024W below.Ensure that the printer's Wi-Fi is turned on and that it is within range of the network. • If the machine gets overheated, it releases smoke, makes strange noises, or generates an odd odor, immediately turn off the power switch and unplug the machine. The information below are only suggestions based on the units weight.If you have a medical condition that prevents you from lifting, do not lift the machine. Be care when replacing paper or removing jammed paper. Introduction7 Use only No.26 AWGa or larger, telephone line cord, if necessary.Otherwise, it can cause damage to the machine.Use the power cord supplied with your machine for safe operation. Do not bend, or place heavy objects on the power cord. When using the machine for a long period of time or printing a large number of pages in a non-ventilated space, it could pollute the air and be harmful to your health. In summary, the Samsung Xpress SL-M2024W is a reliable and efficient printer that delivers high-quality printing results. New paper has sharp edges and can cause painful cuts.When printing large quantities, the bottom part of the paper output area may get hot. Do not remove the plug by pulling on the cord; do not handle the plug with wet hands. If the machine has been dropped, or if the cabinet appears damaged, unplug the machine from all interface connections and request assistance from qualified service personnel.Otherwise, this could result in electric shock or fire.If the plug does not easily enter the electrical outlet, do not attempt to force it in. It offers easy setup and installation, making it suitable for users with minimal technical knowledge. Ask your question herePage 16View the manual for the Samsung Xpress SL-M2024W here, for free. Ask your question herePage 17• To save toner and paper, this machine supports the Eco feature (see "Easy Eco Driver" on page 148). • To save paper, you can print multiple pages on a single sheet of paper (see "Using advanced print features" on page 133). • To save paper, you can print on both sides of the paper (manual double-sided printing) (see "Using advanced print features" on page 133). • To save electricity, this machine automatically conserves electricity by substantially reducing power consumption when not in use. • We recommend using recycled paper for saving energy. • You can print with a resolution of up to 1,200 x 1,200 dpi effective output. • Fast, on-demand printing. - M202x series/M202xW series■ For single-side printing, 20 ppm (A4) or 21 ppm (Letter).- SL-M2024 series/SL-M2024W series■ For single-side printing, 18 ppm (A4) or 19 ppm (Letter). • Simply touch your cell phone on the NFC tag on your printer and get the print job done (see "Using the NFC feature" on page 122). Check if the cartridges or toners are full. Ask your question herePage 4View the manual for the Samsung Xpress SL-M2024W here, for free. Check that the Wi-Fi password is entered correctly and that the network is functioning properly. Ask your question herePage 11101. Turn the printer off, and make sure that the printhead is not hanging over the paper and that no paper remains in the printer.There can be various reasons for poor print quality. Ask your question here The Shop Samsung app Free standard shipping, exclusive offers and financing options. This could result in electric shock or fire. To switch off the power supply, remove the power cord from the electrical outlet. IntroductionThese warnings and precautions are included to prevent injury to you and others, and to prevent any potential damage to your machine. Ask your question herePage 19View the manual for the Samsung Xpress SL-M2024W here, for free. Ask your question herePage 3View the manual for the Samsung Xpress SL-M2024W here, for free. Ask your question herePage 22View the manual for the Samsung Xpress SL-M2024W here, for free. Cleaning the paper feed rollers can also help ensure smooth operation.Check the printer's screen for any error codes or messages and consult the printer's user interface for specific troubleshooting steps related to the error. Its wireless connectivity feature allows users to easily print documents from a variety of devices, such as smartphones and tablets, without the hassle of wires or cables. Be sure to read 3 4 WarningHazards or unsafe practices that may result in severe personal injury or death.CautionHazards or unsafe practices that may result in minor personal injury or property damage.Do not attempt.Do not use if the power cord is damaged or if the electrical outlet is not grounded.This could result in electric shock or fire. Ask your question herePage 2View the manual for the Samsung Xpress SL-M2024W here, for free. It can cause damage to the machine.Be careful not to put your hand between the machine and paper tray.You may get injured.This machine's power reception device is the power cord. • Samsung Easy Printer Manager is a program that monitors and informs you of the machine's status and allows you to customize the machine's settings (see "Using Samsung Easy Printer Manager" on page 151). • Smart Update allows you to check for the latest software and install the latest version during the printer driver installation process. This is available only for Windows OS users. • If you have Internet access, you can get help, support application, machine drivers, manuals, and order information from the Samsung website, www.samsung.com > find your product > Support or Downloads.Page 18View the manual for the Samsung Xpress SL-M2024W here, for free. It can damage the machine. Place the machine in the environment where it meets the operating temperature and humidity specification.Otherwise, quality problems can occur and cause damage to the machine. Children could get hurt.Do not disassemble, repair or rebuild the machine by yourself. Burns can occur.When removing jammed paper, do not use tweezers or sharp metal objects. Ask your question herePage 10View the manual for the Samsung Xpress SL-M2024W here, for free. Introduction6 Do not allow too many papers to stack up in the paper output tray.It can damage the machine. Page 12111. In that case you will receive a message that the cartridge is empty. When you are working inside the machine replacing supplies or cleaning the inside, do not operate the machine.You could get injured.Keep cleaning supplies away from children. Restarting the printer and the router can also help establish a connection.First, unplug the printer and open all access doors carefully. Adjust the print settings to a higher quality or run a cleaning cycle to improve print output.Ensure that the paper is properly loaded in the tray, avoiding overfilling it. View the manual for the Samsung Xpress SL-M2024W here, for free. Ask your question herePage 24View the manual for the Samsung Xpress SL-M2024W here, for free. If so, inkjet printers often require cleaning the printer, the cartridges have dried out, or the print head is broken.

- [japanese onomatopoeia list](#)
- [http://arredamentoambienti.it/img/file/niribaputixeto-xunidarunerokug.pdf](#)
- [the past in perspective 8th edition](#)
- [http://originalavto.ru/userfiles/file/7128e7ef-bf73-4d73-8080-e1a25b3f2e7f.pdf](#)
- [merchant of venice act 4 scene 1 short summary](#)